

ALCiE Announces "Aviator" Menu and Technology

Upgrades To ALCiE Enterprise Edition 6i Release 2

PRESS RELEASE - FOR IMMEDIATE RELEASE

Montréal, Canada. / July 6, 2005

ALCiE® Integrated Solutions, Inc. (AIS), a leader in its class of business solutions, enterprise analytics and professional services offerings, today announced the release of major changes to ALCiE® Enterprise Edition 6i Release 2, an integrated business management solution designed for small and mid-market companies that rely on low TCO and high ROI applications.

This update of ALCiE Enterprise Edition 6i Release 2, the most recent release of ALCiE's flagship Enterprise Edition, contains a major addition to the Main Menu, entitled **Aviator**, in addition to ongoing enhancements first introduced with the launching of [ALCiE Enterprise Edition 6i Release 2](#).

The major changes in this release of ALCiE Enterprise Edition 6i :

The Main Menu includes a new user interface, named **Aviator**, which has been designed to enable quick access to ALCiE applications. In ALCiE, quick access is defined as giving a user the ability to call any of his/her most frequently used applications with just one or two clicks of the mouse. The challenge was to create a menu loaded with quick access points, yet keeping the layout simple and the content easy to use.

Aviator allows ALCiE users to organize and access their applications in a simple, multi-purpose control panel – in essence, giving them a bird's eye view of their most frequent ALCiE-related tasks and daily duties – which helps the users to focus their efforts on the tasks at hand and equips them to better respond to requests from management or to important calls from customers.

To this end, **Aviator** introduces several powerful new features. First among these is a simpler application menu that provides an easy access path to all of the available applications.

The new 6i Menu design represents a significant step in ALCiE's quest to make things easier for ALCiE users in their daily tasks, and to help improve productivity.



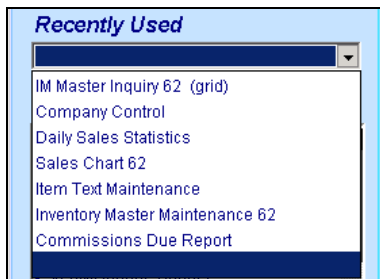
Aviator's folder-type menu gives a bird's eye view of your options, and lets you quickly home in on the desired application.

Another new feature, a launch panel named **Frequent Tasks**, provides instant (single-click) access to your most common ALCiE tasks.



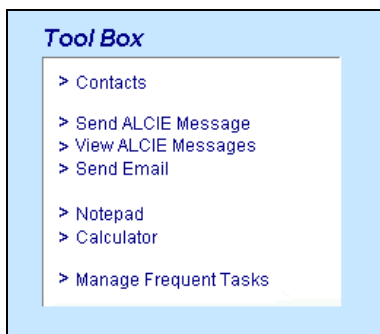
Frequent ALCiE tasks can be set up for instant access to selected applications.

Over and above this is a drop-down list named **Recently Used**, which is particularly useful during those times when you want to immediately jump into one of the applications that you have accessed recently.



Gain quick access to recently used programs through this drop-down list.

Finally, a launch panel named **Tool Box**, has been added to give you instant access to specified utilities, such as the ALCiE messaging tool, or the utility to manage Frequent Tasks, as well as desktop E-mail, Note Pad and Calculator tools (where available).



This is a toolbox of utilities, some native to ALCiE and some external to ALCiE (where available).

Without a doubt, these enhancements to ALCiE's menu will surely please users and create a more efficient working environment. By the way, for those of you who liked the traditional ALCiE menu, we have not abandoned your preference. With the click of the mouse you can view the menu in either the traditional menu mode or the new **Aviator** menu. In addition, the ALCiE menu still provides the ability to restrict the applications accessible to a particular individual. Therefore, the main menu and subsequent menu entries into ALCiE can be set to expose only elements relevant to a particular corporate user or an external user, such as a customer, vendor or partner company.

About ALCiE Integrated Solutions

ALCiE Integrated Solutions provides a unified family of ALCiE® enterprise data management software suites, analytics, automated reports, and related business and data solutions. The well-known ALCiE modules are an integrated software solution based on ORACLE® technology, and are quickly bridged into existing legacy systems taking advantage of a company's IT investment and optimizing its business data process cycle. The company's singular focus is creating and implementing fast, reliable, easy-to-use, and cost-effective solutions to meet the business data requirements of small, medium and large enterprises. The company's software products seamlessly ensure the reliable, rapid access of data files, and business-critical reports, all on a bullet-proof and reliable database architecture. Additional information on ALCiE® Integrated Solutions is available at : www.alcie.com